

2022 Bond Oversight Committee

April 17, 2023



2022 Bond Oversight Committee – April 2023

- **Welcome**
- **Scope of Work**
- **Appoint Chair/Co-Chair**
- **Verify Contact Information**

Congratulations Birdville ISD Community!



BOND22

BISD Birdville Independent School District

Proposition A: **21,849** Votes For | **18,736** Votes Against

Proposition B: **21,590** Votes For | **18,828** Votes Against

THIS IS MY BIRDVILLE ISD



Bond Savings

Summary of Interest Cost Savings – Bond Refunding Programs / Prepayment of Bonds

Issue / Description	Series Refunded / Redeemed	Par Amount Refunded / Redeemed	Total Savings
Unlimited Tax Refunding Bonds, Series 2012	2006	\$ 23,215,000	\$ 2,352,288
Unlimited Tax Refunding Bonds, Series 2014	2004	20,675,000	1,076,754
Unlimited Tax Refunding Bonds, Series 2015-B	2007, 2008-A	98,312,148	14,931,944
Total - Bond Refunding Programs at a Lower Interest Rate	---	\$ 142,202,148	\$ 18,360,986
Prepayment of Series 2008-A Bonds - February 2014	2008-A	\$ 4,400,000	\$ 3,873,500
Prepayment of Series 2007 & 2008-A Bonds - February 2015	2007, 2008-A	5,230,000	3,963,000
Prepayment of Series 2007 Bonds - February 2016	2007	1,140,000	798,000
Prepayment of Series 2007 Bonds - February 2018	2007	1,048,105	315,306
Prepayment of Series 2007 Bonds - February 2019	2007	4,477,911	2,152,754
Prepayment of Series 2007 Bonds - February 2020	2007	2,165,000	712,156
Prepayment of Series 2019 Bonds - February 2022	2019	2,975,000	2,454,375
Prepayment of Series 2019 Bonds - February 2023	2019	7,545,000	5,941,688
Total - Prepayment of Bonds Prior to Scheduled Maturity	---	\$ 28,981,016	\$ 20,210,779
Totals	---	\$ 171,183,164	\$ 38,571,765

Bond Issuances

- **Proposed bond issuances**

- February 2023 \$151,245,699
- February 2024 \$109,950,380
- February 2025 \$39,580,011

- **February 2023 bond issuance results**

- Projected interest rate: 4.44 percent
- Final interest rate: 3.81 percent
- Interest savings: \$18 million

Other Bond Information

- District Tax Rates**

Fiscal Year	M&O Tax Rate	I&S Tax Rate	Total Tax Rate	Year to Year Change
2014	\$ 1.0400	\$ 0.3950	\$ 1.4350	
2015	\$ 1.0400	\$ 0.3950	\$ 1.4350	\$ -
2016	\$ 1.0400	\$ 0.4139	\$ 1.4539	\$ 0.0189
2017	\$ 1.0400	\$ 0.4139	\$ 1.4539	\$ -
2018	\$ 1.0400	\$ 0.4139	\$ 1.4539	\$ -
2019	\$ 1.0400	\$ 0.4139	\$ 1.4539	\$ -
2020	\$ 0.9700	\$ 0.4139	\$ 1.3839	\$ (0.0700)
2021	\$ 0.9664	\$ 0.4139	\$ 1.3803	\$ (0.0036)
2022	\$ 0.9241	\$ 0.4139	\$ 1.3380	\$ (0.0423)
2023	\$ 0.8659	\$ 0.4139	\$ 1.2798	\$ (0.0582)

Other Bond Information

- **District Financing Goals**
 - No tax rate increase due to the 2022 Bond election
 - Maintain a bond repayment period of 25 years or less
 - Fully repay bonds issued for certain short-term projects over their useful lives
 - Technology devices – 5 years
 - Buses – 10 years
 - Technology infrastructure – 10 years
 - Furniture, Fixtures and Equipment – 10 years

Construction Manager at Risk (CMAR)

- **What is the CMAR Procurement Method?**

- ♦ The District contracts with an architect and construction manager
 - Project Design
 - Project Consultation
 - Project and Budget Development
 - 50 % of Plan Development
 - 90% of Plan Development
 - The team determines the most efficient and effective method for completing Construction/Renovation
- ♦ **Guaranteed Maximum Price (GMP)**

Construction Manager at Risk (CMAR)

- **What is the Difference Between CMAR Procurement Method and Competitive Sealed Proposals (CSP)**
 - ◆ **CMAR**
 - Team Concept
 - Value Engineering prior to actual bid
 - Quality Control
 - ◆ **CSP**
 - District and Architect
 - Contractor not Involved in planning
 - Value Engineering after bid process
 - Quality Control

Bob E. Griggs High School



BIRDVILLE ISD

BOB E. GRIGGS HIGH SCHOOL & LINDA KUNKEL SPECIALIZED LEARNING CENTER BUILDING RENOVATIONS

4051 Denton Hwy, Haltom City, TX 76117

100% ISSUE FOR PROPOSAL



03/06/2023

BOARD OF TRUSTEES

KELVIN DILKS
RICHARD DAVIS
KRIS DREES
JOE TOLBERT
BRENDA SANDERS-WISE
MATTHEW WOMBLE
RALPH KUNKLE

PRESIDENT
VICE PRESIDENT
SECRETARY
TRUSTEE
TRUSTEE
TRUSTEE

GAYLE STINSON, Ed D
SKIP BASKERVILLE
ELIZABETH A. CLARK, Ed. D.
DAVE LAMBSON
KATIE BOWMAN, CPA
MARK THOMAS

ADMINISTRATION

SUPERINTENDENT
ASSOCIATE SUPERINTENDENT FOR HUMAN RESOURCES, GOVERNANCE & SUPPORT SERVICES
ASSOCIATE SUPERINTENDENT FOR CURRICULUM & INSTRUCTION
CHIEF TECHNOLOGY OFFICER
ASSOCIATE SUPERINTENDENT FOR FINANCE & AUXILIARY SERVICES
CHIEF COMMUNICATIONS OFFICER

OWNER
BIRDVILLE ISD
810 E. 501 ST. #1
HALTOM CITY, TX 76117
T 817-544-6888

ARCHITECT
RNC ARCHITECTURE
1700 NORTH DRIVE
SUITE 1140, DALLAS, TX 75201
T 972-422-1222

CIVIL/LANDSCAPING ENGINEER
TNP
5237 N. RIVERSIDE DR. SUITE 100
FORT WORTH, TX 76117
T 817-711-6151

STRUCTURAL ENGINEER
ALPHA CONSULTING ENGINEERING
4075 PRESTON ROAD SUITE 400W
PLANO, TX 75093
T 469-389-0762

MEET ENGINEER
EMA ENGINEERING
308 S. ROCKDAVE AVE.
TYLER, TX 75702
T 936-881-9277

FOOD SERVICES
JMK FOOD SERVICE
8431 LAKVIEW PARKWAY
STE. 205, ROCKLETT, TX
T 214-227-0481

THIS IS MY BIRDVILLE ISD



Mullendore Elementary Replacement School

BIRDVILLE ISD
NORTH RICHLAND HILLS, TEXAS



ARCHITECT
WU Architecture, Inc.
 1100 Maryland Street Suite 400
 Nashville, TN 37203
 Bob Wray 615-259-1999
www.wuarch.com

Trague, Noll & Perkins, Inc.
6227 N. Milwaukee Dr., Suite 100
Portland, Texas 76068
800-895-3333

LANDSCAPE IRRIGATION
Trojan, Staff & Perkins, Inc.
 5071 N. Phoenix St., Suite 100
 Hawthorne, Texas 75429
 Main Phone: 817-285-9775
www.tsp-irrigation.com

JPR Foodservice Consulting
100 Lakeside Plaza, Suite 150
Riverside, Texas 76780
Main Phone: 214-227-1200
www.jprinc.com

University Publications
300 Bailey Avenue, Suite 620
Fairfield, Texas 76424
800-333-3333 ext. 224
www.kennedykrieger.com

DR. P. SHIMPER

CONTACTING: 404
100 South Broadway Avenue
Tucker, Texas 75081
Web: Phone: 409/521-2673
www.universitytheatrical.com

CONSTRUCTION WAMAZON

800-633-6666
www.3ds.com

NOT FERRIS, A TERRY
SPRINKLE, PRINCE OF

ISSUED APRIL 12, 2023

ment:

October
2006

W.R. GC
Prog. Arch.
CBE
PROJECT NO.
00 484 00

COVER

Mullendore Elementary Replacement School

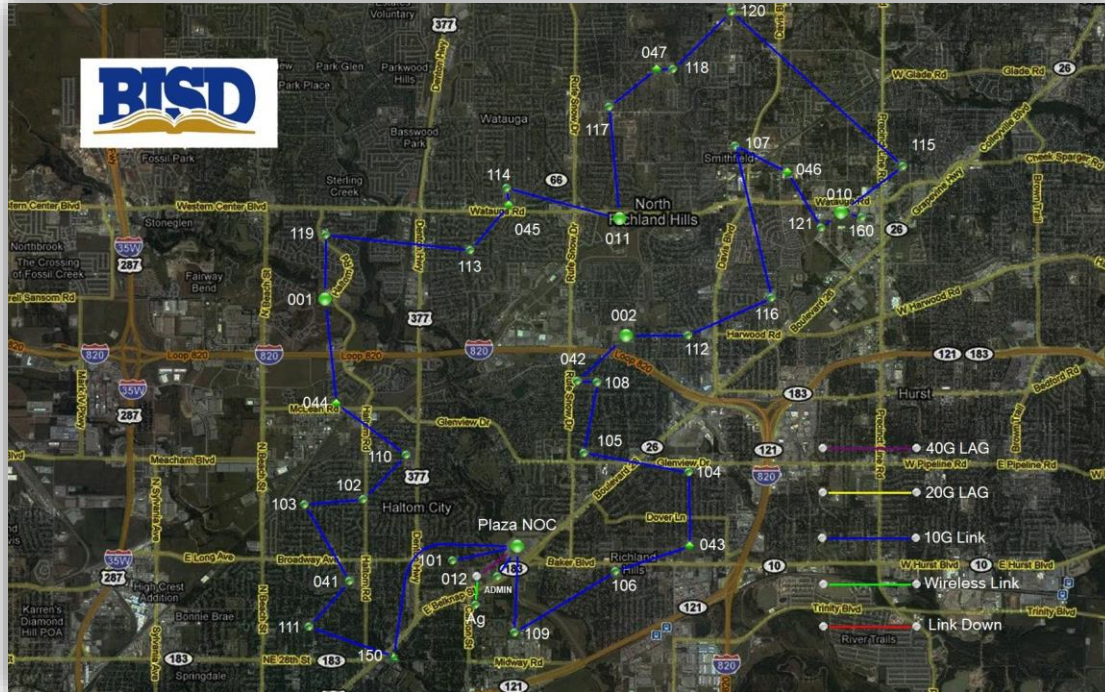
Other Projects

- ♦ David E. Smith Elementary Partner School
- ♦ Modulares for Francisco Elementary
- ♦ Haltom High School Renovations
- ♦ Birdville High School Courtyard Renovations
- ♦ Turf and Press Box Renovations

Technology Projects

- **Network Upgrade**
 - Category 1 E-Rate Campus Wide Area Network (WAN)
 - Category 2 E-Rate Campus Local Area Network (LAN)
 - Non-Campus WAN & LAN Equipment
- **Teacher/Staff Devices**
 - Tech Steering Committee
- **Classroom Interactive Flat Panels**
- **Security Camera and Door Access Upgrade**

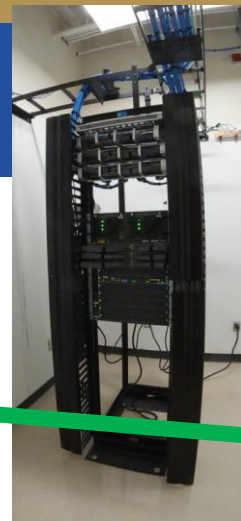
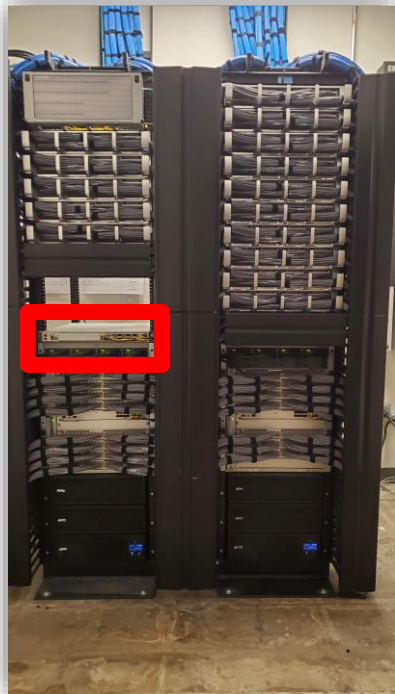
Network Upgrade



THIS IS MY BIRDVILLE ISD



WAN vs LAN



Category 1 E-Rate Campus Wide Area Network

- **Wide Area Network (WAN) Connectivity**

- Equipment that provides connectivity between instructional facilities and connects them to the internet
- Competitive bid
- Approved by the Board in February 2023

Category 2 E-Rate Campus Local Area Network

- **Campus Local Area Network (LAN) Connectivity**

- Network equipment that provides connectivity inside instructional facilities, between classrooms, offices, etc.
- Currently out for bid
- Board action in May
- Purchase after USAC*/FCC Review

* USAC = Universal Service Administrative Co. that administers E-Rate under the direction of the Federal Communications Commission (FCC)

Non-Campus WAN & LAN Equipment

- **WAN/LAN for Department and Non-Campus Facilities**
 - Examples include Administration Building, Coliseum, Warehouse, Transportation, FAAC, Professional Learning Plaza, Special Education and Technology.
 - Separate Board action in May.

Teacher/Staff Devices

- **Teachers and Staff will receive new, upgraded laptops**
 - The Technology Department received demonstration units of the latest laptop models from Dell, Lenovo and HP.
 - The BISD Tech Steering Committee was also involved in the evaluation and provided valuable feedback.



Tech Steering Committee

CAMPUS FACULTY AND STAFF	NUMBER
Elementary Teachers and Staff	20
Secondary Teachers and Staff	19
Principals	4
Assistant Principals	4
Librarians	4
GATE Teachers	2
Administrative Assistants	2
Instructional Coaches	2
Project Lead the Way (PLTW) Teachers	2
Interventionists	1
ASPIRE Teachers	1
Academic Deans	1

CENTRAL OFFICE & DEPARTMENTS	NUMBER
Teaching and Learning	5
Special Education	3
Counseling and Guidance	2
Assessment	1
Facilities and Maintenance	1
Fine Arts	1
Multilingual Services	1
Purchasing	1
Student Services	1
Transportation	1
Adult Education	1

Teacher/Staff Laptop Replacement



Teacher/Staff Laptop Replacement



- **Lenovo ThinkPad L15**

- Large 15.6 Inch touch screen display
- Backlit keyboard with “10 key” numeric keypad
- Latest 2023 AMD Ryzen 5 Pro processor
- 16GB of RAM memory
- 512GB of solid-state storage
- Windows 11

Classroom Interactive Flat Panels

- **Smart IFP MX Series**

- 75 inch for secondary classrooms
- 65 inch for elementary classrooms



Security Camera and Door Access Upgrade

- Student Services and Technology evaluated multiple security solutions and collaborated with other districts to compare products.

AVIGILON™



THIS IS MY BIRDVILLE ISD



Security Camera and Door Access Upgrade

Appearance Search



Find what you're looking for faster, over vast amounts of recorded video with ease

Focus of Attention



A new concept in video monitoring that brings a more intuitive way to consume information about potential security events

License Plate Recognition



Automatically reads license plate information from vehicles and links it to live and recorded video

Next-Generation Video Analytics



State-of-the-art deep learning algorithms designed to change the way video is monitored

Self-Learning Video Analytics



Accurately recognizes the movements of people and vehicles while ignoring motion not relevant to a scene

Unusual Activity Detection



Edge-based intelligence designed to enable detection of atypical activities

Unusual Motion Detection



Reveal events that might otherwise be missed

Security Camera and Door Access Upgrade

- **Avigilon**

- Board Action in May for Data Center equipment
- Bid for cameras and door access hardware upgrade and installation is in design



Website/Bond Questions to . . .

- bond22@birdvilleschools.net

or visit

- **birdvilleschools.net/bisdbonds**